

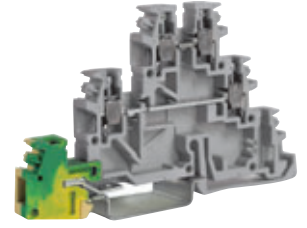
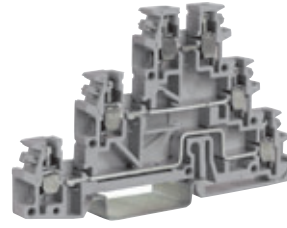
# On two levels

## with UL94V-0 polyamide insulating body

- 3 feed-through levels
- 3 levels + earth connection
- to be mounted onto TH 35-7,5 and TH 35-15 type rails - according to IEC 60715 Std.
- available in grey RAL 7042 and beige RAL 1001 colours



with earth connection on lower level



with earth connection on lower level and feed-through on intermediate and upper levels

The /GR tag indicates the grey colour version.

(\*): 24 A factory wiring only

<b>grey version</b>	
<b>beige version</b>	
<b>(Ex)i version</b>	
<b>TECHNICAL CHARACTERISTICS</b>	
function / type	
rated cross-section	(mm <sup>2</sup> )
connecting capacity	
flexible	(mm <sup>2</sup> )
rigid	(mm <sup>2</sup> )
max. flexible with ferrule (mm <sup>2</sup> )-ferrule type	
rated voltage / rated current / gauge	conf. to IEC 60947-7-1
rated voltage / rated current / AWG / tightening torque value	UL (Ex e) rated voltage  /  (V)
rated impulse withstand voltage / pollution degree	
insulation stripping length	(mm)
tightening torque value (test / max)	(Nm)
height / width / thickness	TH/35 7,5 mm
height / width / thickness	TH/35 15 mm
height / width / thickness	G32

<b>TLE.2/GR</b>	Cat. No. <b>TL400GR</b>
<b>TLE.2</b>	Cat. No. <b>TL400</b>
<b>TECHNICAL CHARACTERISTICS</b>	
2 levels + earth for actuators	
2,5	
0,2 ÷ 4	
0,2 ÷ 4	
2,5 - WP25/14	
250 V / 24 A / A3	
600 V / 20 A (*) / 20 ÷ 12 AWG / 3,5 lb.in	
-	
4 KV / 3	
8	
0,4 / 0,8	
52 / 62,5 / 6,2	
60 / 62,5 / 6,2	
-	

<b>TLD.2/GR</b>	Cat. No. <b>TL200GR</b>
<b>TLD.2</b>	Cat. No. <b>TL200</b>
<b>TLD.2 (Ex)i</b>	Cat. No. <b>TL300</b>
<b>TECHNICAL CHARACTERISTICS</b>	
3 feed-through levels	
2,5	
0,2 ÷ 4	
0,2 ÷ 4	
2,5 - WP25/14	
250 V / 24 A / A3	
600 V / 15 A / 20-12 AWG / 3,5 lb.in	
-	
4 KV / 3	
8	
0,4 / 0,8	
52 / 85 / 6,2	
60 / 85 / 6,2	
-	

<b>TDE.2/GR</b>	Cat. No. <b>TL500GR</b>
<b>TDE.2</b>	Cat. No. <b>TL500</b>
<b>TECHNICAL CHARACTERISTICS</b>	
2 feed-through levels + earth	
2,5	
0,2 ÷ 4	
0,2 ÷ 4	
2,5 - WP25/14	
250 V / 24 A / A3	
600 V / 20 A (*) / 20 ÷ 12 AWG / 3,5 lb.in	
-	
4 KV / 3	
8	
0,4 / 0,8	
52 / 85 / 6,2	
60 / 85 / 6,2	
-	

### APPROVALS



<b>ACCESSORIES</b>	
End sections	grey beige intermedio
Permanent cross connection	
Rated current carrying capacity of jumper	(A)
Switchable cross connection	
Multiple common bar	250 mm
Shunting screw and sleeve	
Coloured partition	red, green, white
Cross connection barrier	red
Test plug socket	
Test plug	
Modular test plug	
End section for modular test plug	
Numbering strip	
Warning plate	on adjacent terminal blocks
Cover for cross-connection	
Marking tag	printed or blank
End bracket	
Mounting rail	
according to IEC 60715 Std.	

<b>Type</b>	<b>Cat. No.</b>
<b>TLS/PT/GR</b>	TL101GR
<b>TLS/PT</b>	TL101
<b>PM/20/2</b> poles	PM202
<b>PM/30/3</b> poles	PM303
<b>PM/30/5</b> poles	PM305
<b>PM/30/10</b> poles	PM310
<b>24</b>	
<b>POS/41</b>	POS41
<b>PMP/02</b>	PMP02
<b>CPM/21</b>	CPM21
<b>DFU/3</b>	DU03..
<b>DFM/400</b>	DF400
<b>PSD/D</b>	PD004
<b>SDD/1</b>	DD001
-	
-	
-	
-	
<b>PRP/5</b>	PRP05
<b>CNU/8/51</b>	NU0851
<b>BTU</b> for PR/DIN and PR/3	BT005
<b>BTO</b> for PR/3 only	BT007
<b>BT/3</b> for PR/3 only	BT003
-	
<b>PR/3/AC</b> of steel	PR003
<b>PR/3/AS</b> same with slots	PR005

<b>Type</b>	<b>Cat. No.</b>
<b>TLD/PT/GR</b>	TL201GR
<b>TLD/PT</b>	TL201
<b>TLD/PI</b>	TL202
<b>PM/20/2</b> poles	PM202
<b>PM/30/3</b> poles	PM303
<b>PM/30/5</b> poles	PM305
<b>PM/30/10</b> poles	PM310
<b>24</b>	
<b>POS/41</b>	POS41
<b>PMP/02</b>	PMP02
<b>CPM/21</b>	CPM21
<b>DFU/3</b>	DU03..
<b>DFM/400</b>	DF400
<b>PSD/D</b>	PD004
<b>SDD/1</b>	DD001
-	
-	
<b>CNU/8/51</b>	NU0851
-	
<b>PRP/5</b>	PRP05
<b>CNU/8/51</b>	NU0851
<b>BTU</b> for PR/DIN and PR/3	BT005
<b>BTO</b> for PR/3 only	BT007
<b>BT/3</b> for PR/3 only	BT003
-	
<b>PR/3/AC</b> of steel	PR003
<b>PR/3/AS</b> same with slots	PR005

<b>Type</b>	<b>Cat. No.</b>
<b>TLD/PT/GR</b>	TL201GR
<b>TLD/PT</b>	TL201
<b>PM/20/2</b> poles	PM202
<b>PM/30/3</b> poles	PM303
<b>PM/30/5</b> poles	PM305
<b>PM/30/10</b> poles	PM310
<b>24</b>	
<b>POS/41</b>	POS41
<b>PMP/02</b>	PMP02
<b>CPM/21</b>	CPM21
<b>DFU/3</b>	DU03..
<b>DFM/400</b>	DF400
<b>PSD/D</b>	PD004
<b>SDD/1</b>	DD001
-	
-	
<b>CNU/8/51</b>	NU0851
-	
<b>PRP/5</b>	PRP05
<b>CNU/8/51</b>	NU0851
<b>BTU</b> for PR/DIN and PR/3	BT005
<b>BTO</b> for PR/3 only	BT007
<b>BT/3</b> for PR/3 only	BT003
-	
<b>PR/3/AC</b> of steel	PR003
<b>PR/3/AS</b> same with slots	PR005