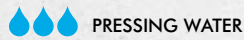


UGA BKD 150 flange sleeve

Including plug caps that are leak-tight against
pressing water



- Use in unfinished structures to be made from waterproof concrete (white tank)
- With bayonet closure



PRODUCT ADVANTAGES

- Quick, easy installation
- Leak-tight against gas and pressing water immediately after installation due to plug cap
- Permanently reliable sealing
- Versatile variants and connection options thanks to precisely fitting system caps and inserts
- Assembling in batteries possible thanks to easy combination of flange sleeves
- No reworking required
- Special design for twin/element walls

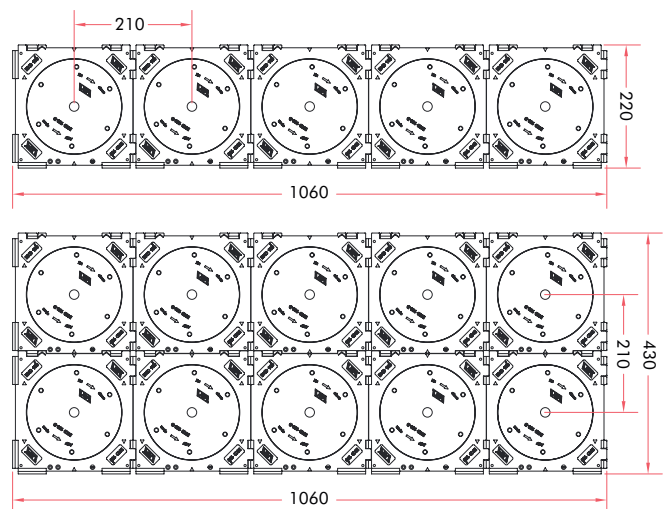
TECHNICAL DETAILS

- Single flange sleeve can be used for 50–500 mm wall thickness
- Double flange sleeve can be used for 100–500 mm wall thickness
- Design for wall thicknesses over 500 mm possible

PRODUCT SCOPE

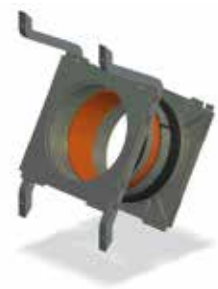
- Flange sleeve for holding system plug cap with protective film, leak-tight against pressing water
- The flange sleeve has a sealing system. This ensures an absolute leak-tight connection to the concrete.

ASSEMBLING IN BATTERIES



Angular flange sleeve

Suitable for cables laid at an angle of 30°, 45° or 60° coming from any direction. With auxiliary frame and polystyrene wedge. Single or double flange sleeve available. Minimum wall thickness is 250 mm.



The UGA range is excluded from the DOYMA 25-year warranty.



Product		Article number
BKD150-K/150	Single flange sleeve for wall thicknesses up to 500 mm	4 01 1 150 150 0 4
BKD150-K/200		4 01 1 150 200 0 4
BKD150-K/250		4 01 1 150 250 0 4
BKD150-K/300		4 01 1 150 300 0 4
BKD150-K/400		4 01 1 150 400 0 4
BKD150-K/500		4 01 1 150 500 0 4
BKD150-K2/150	Double flange sleeve for wall thicknesses up to 500 mm	4 02 1 150 150 0 4
BKD150-K2/200		4 02 1 150 200 0 4
BKD150-K2/250		4 02 1 150 250 0 4
BKD150-K2/300		4 02 1 150 300 0 4
BKD150-K2/400		4 02 1 150 400 0 4
BKD150-K2/500		4 02 1 150 500 0 4
BKD150-K2-EW/150	Double flange sleeve for twin/element walls with thicknesses up to 500 mm	–
BKD150-K2-EW/200		–
BKD150-K2-EW/250		–
BKD150-K2-EW/300		–
BKD150-K2-EW/400		–
BKD150-K2-EW/500		–

Article	Angle
Schräg-Einfach-Dichtpackung	
BKD150-K-S30/(L)	30°
BKD150-K-S45/(L)	45°
BKD150-K-S60/(L)	60°
Schräg-Doppel-Dichtpackung	
BKD150-K2-S30/(L)	30°
BKD150-K2-S45/(L)	45°
BKD150-K2-S60/(L)	60°

The distances of the auxiliary frame must be taken into account when assembling items in batteries one on top of the other.